

XM Student Term License Information BP#4015549

Server Name: selectserver.bentley.com

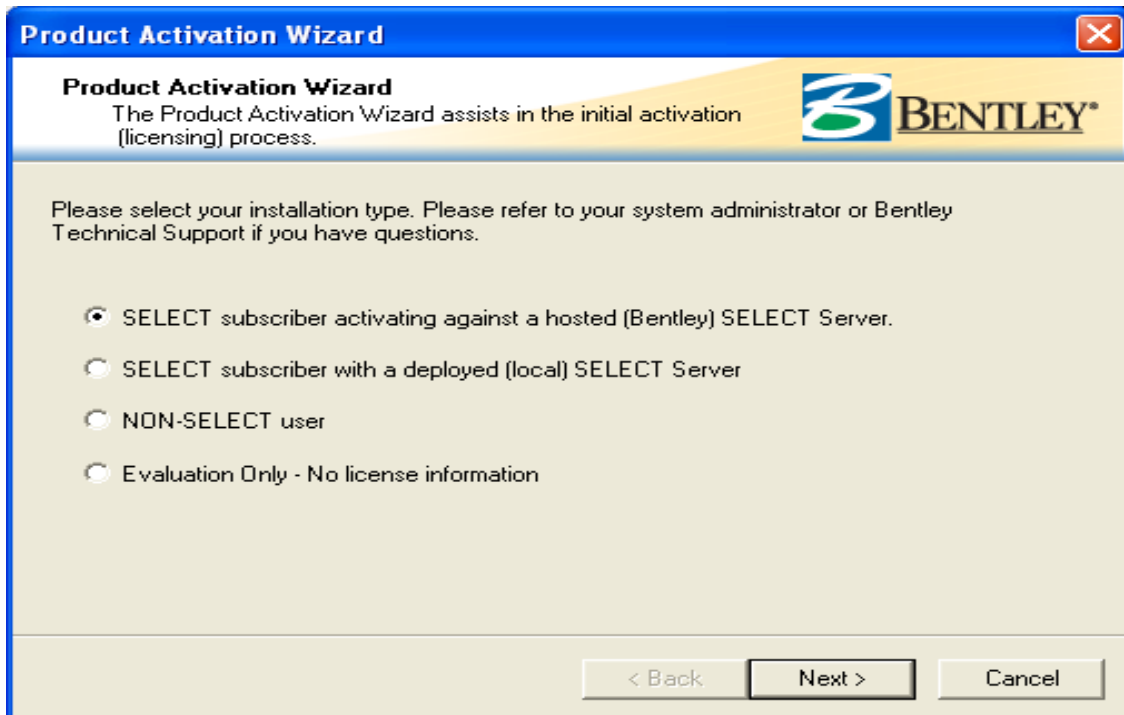
Site/gateway Activation Key E19CF4996BB4244BA8370ED9E3A8D3AF

Obtaining your Bentley XM Software License

Your XM application needs to connect to the Bentley Licensing system in order to authenticate your license. Dependant upon the configuration at your company, this usually happens automatically. To activate your product(s), you will need to enter a server name and site activation key into the product when it starts up after installation.

1. Open the application. If a warning dialog appears telling you the application is not authorized, allow the application to operate in Demo mode.
2. Select Utilities | License Management.
3. The "License Management Tool" dialog opens. Select Tools | Options.
4. The "Options" dialog opens. Input the new Site Activation Key in the field provided. Press [verify] to confirm it is working properly, and finally press [OK] to save the changes.


The first time each application is run using the student term license, you will be prompted to activate the software. Users should choose "SELECT subscriber activating against a hosted (Bentley) SELECT server, as shown below, and then click Next.



The user would then input the activation key that is provided to them in the Student XM Licensing Instructions.

Product Activation Wizard

Activating against a SELECT Server
Please enter your SELECT Server information.



If you are activating against a local SELECT Server, you are required to provide the server name and site activation key. If you are activating against Bentley's SELECT Server, your server name is provided.

Server Name


Site Activation Key

Use HTTPS (SSL)

They would then opt to use a checked out license and choose which application they want to check out. This will offer users the ability to use all of Bentley's products, including Haestad, REI/STAAD and Ram, including all international design codes.

Product Activation Wizard

License Checkout
The Product Activation Wizard can perform a license checkout for you now.



Would you like to check out a license to your computer (machine)?

Use a checked out license

Email Address:

Product Name:

Product Version:
 . . .

Click Next and the Product Activation Wizard will confirm your choice to use a checked out license and verify the activation key that was input. Please note that your key will differ from the one in the screen shot displayed below. User will then be able to run the chosen

application. This process will have to be done for each application that is used under their student license.

